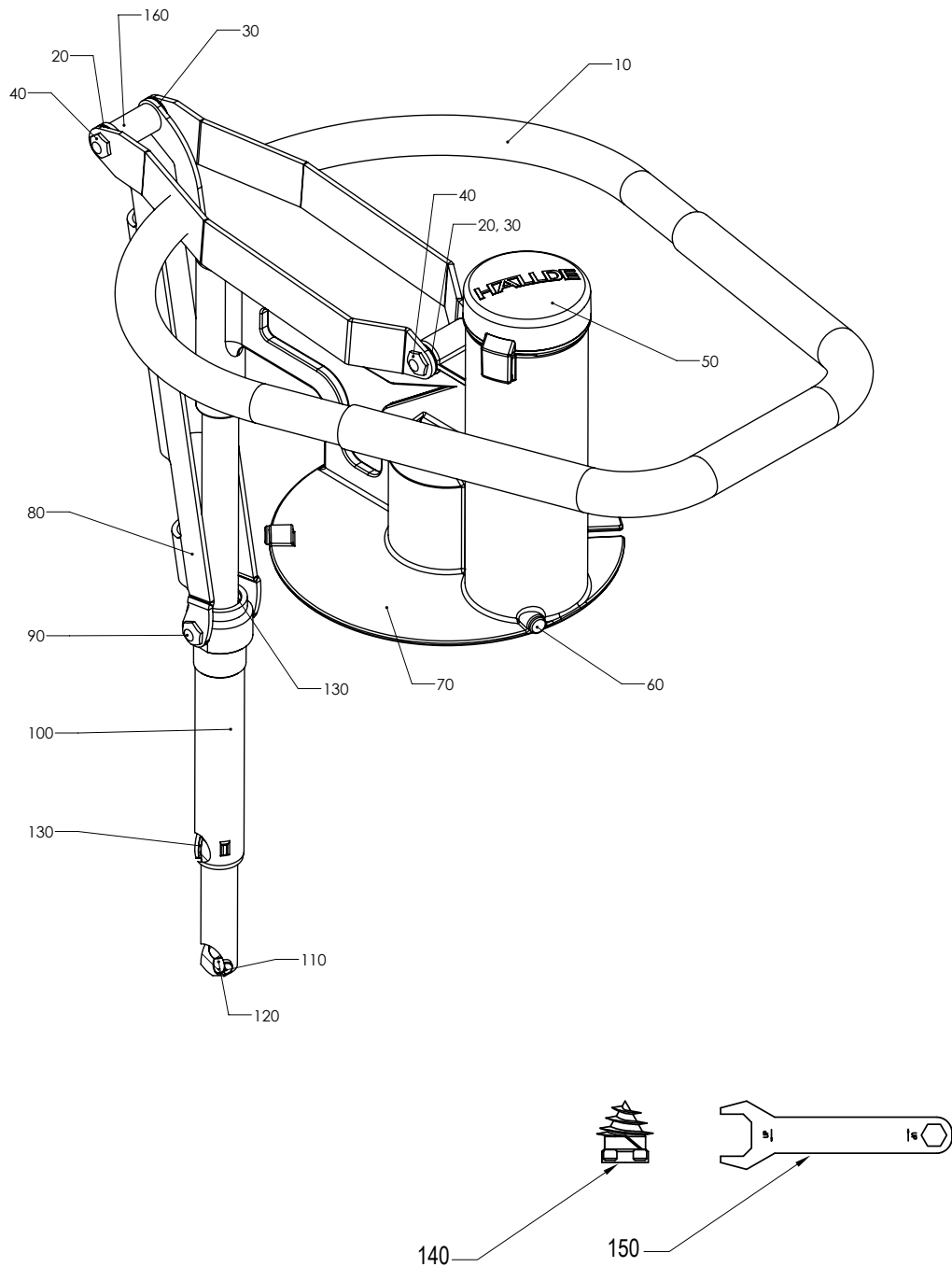


## RG-300i

No. on drawing	Item No.	Description	Pcs
10	37042	Ejector plate	1
20	14800	Locking screw PSS M10X 12 A2 70	1
30	47548	Carrier pin	1
40	37059	Carrier pin for ejector plate	2
50	10311	Seal ring V-35S	1
60	47001	Knife chamber	1
70	47208	Magnetic switch HM-PR15.2	1
80	15692	Nut PG 9 plastic	1
100	14011	Screw MC6S M4x25	4
120	47207	Wiring loom machine	1
160	14084	Lock washer FBB 4.1 A2	6
170	14009	MC6S M4x40	6
180	14464	Screw LSKS M6X16	4
190	47121	Bracket Compl. 380-415	1
200	47209	Bracket compl.	1
210	47085	Bushing	1
215	47118	Bushing	1
220	47076	Micro switch compl.	1
230	15565	Micro switch XGT42C-86-S20Z1	2
240	15443	Nut PR 22.5/PG16 metal	1
250	15381	Cable ret PR 22.5 dia 15	1
260	15142	Supply cord CB 3 phse	1
270	14086	Lock washer FBB 6.1 A2	6
280	14006	Nut M6M M6 A2 70	2
285	14007	Nut, locking LM M6 A2	10
300	47099	EI-plate	1
310	40556	DIN-skena TS35 DIN EN 50022	2
315	15827	Overload rel.RF120320	1
320	15810	Contactora 11BG0610A230	2
325	24664	Grommet	1
330	15110	RC-circuit 230v	1
345	14616	Skruv RTK ST3.5X6.5 A2 70	2
350	47015	Machine housing back	1
360	15202	Cable tie/screw mount	1
370	14004	Nut M6M M4 A2 70	1
380	47060	Electric unit 220-240 1 50/60	1
400	47006	Screw M6 axle	1
410	47009	Knife shaft	1
420	47210	Locking lug compl.	1
430	37297	Tray	1
440	47008	Motor plate	1
445	10444	Seal ring basl 35X52X10	1
450	47047	Motor	1
480	15439	Push button o complete	1
490	15440	Push button 1 complete	1
510	47017	Hinge	1
511	37206	Seal ring	1
512	14147	Screw MFS M6x40	1
513	14013	Screw MFS M6x30	1
520	15385	Fuse holder	1
521	15384	Fuse T100MA	1
522	15380	Safety for fuse	1
523	14611	Screw RTK ST2.9X9.5 A2 70	1
560	47125	Machine house	1
600	37085	Cover feet	2
610	10328	Rubber foot no. 19M 10X60	2
630	47211	Wheel compl.	2
650	47350	Base	1

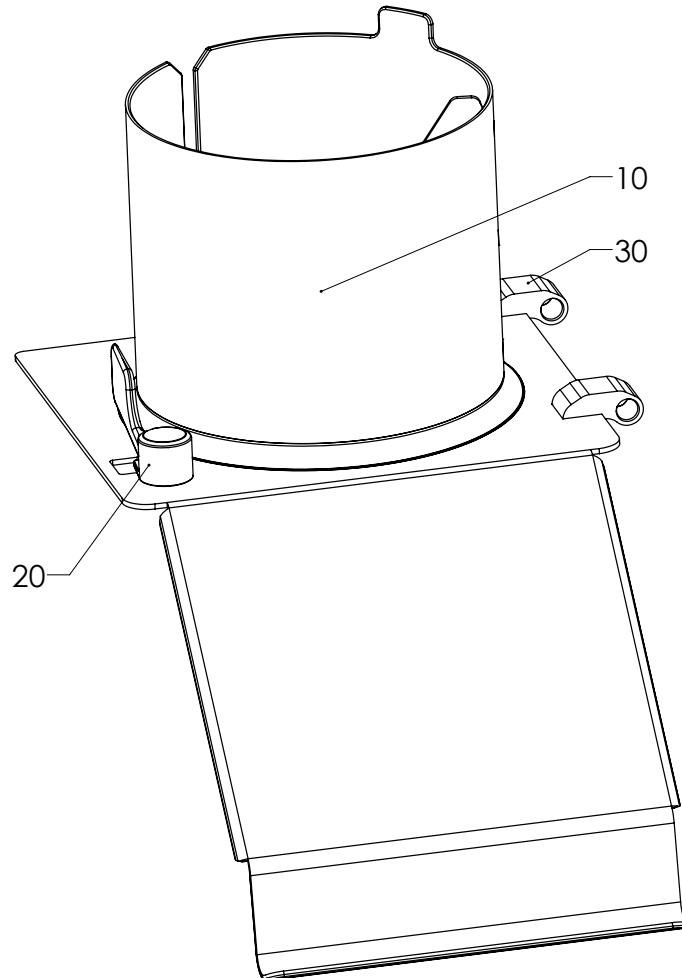
## RG-300i MANUAL FEEDER, ERGO LOOP

No. on drawing	Item No.	Description	Pcs
10	47090	Pusher handle ergo	1
20	47052	Shaft L=40	2
30	40848	Bushing	4
40	25191	Screw for link system	2
50	40554	Pestle	1
60	3257	Guide knob	3
70	47049	Feeder plate incl. Shaft	1
80	47014	Link	1
90	47089	Screw	2
100	47086	Sleeve for link system	1
110	47088	Pin	1
120	14833	Lock screw	1
130	47087	Bushing	2
140	3129	Decorating device 3ph	1
150	3162	Wrench	1
160	47119	Sleeve	1



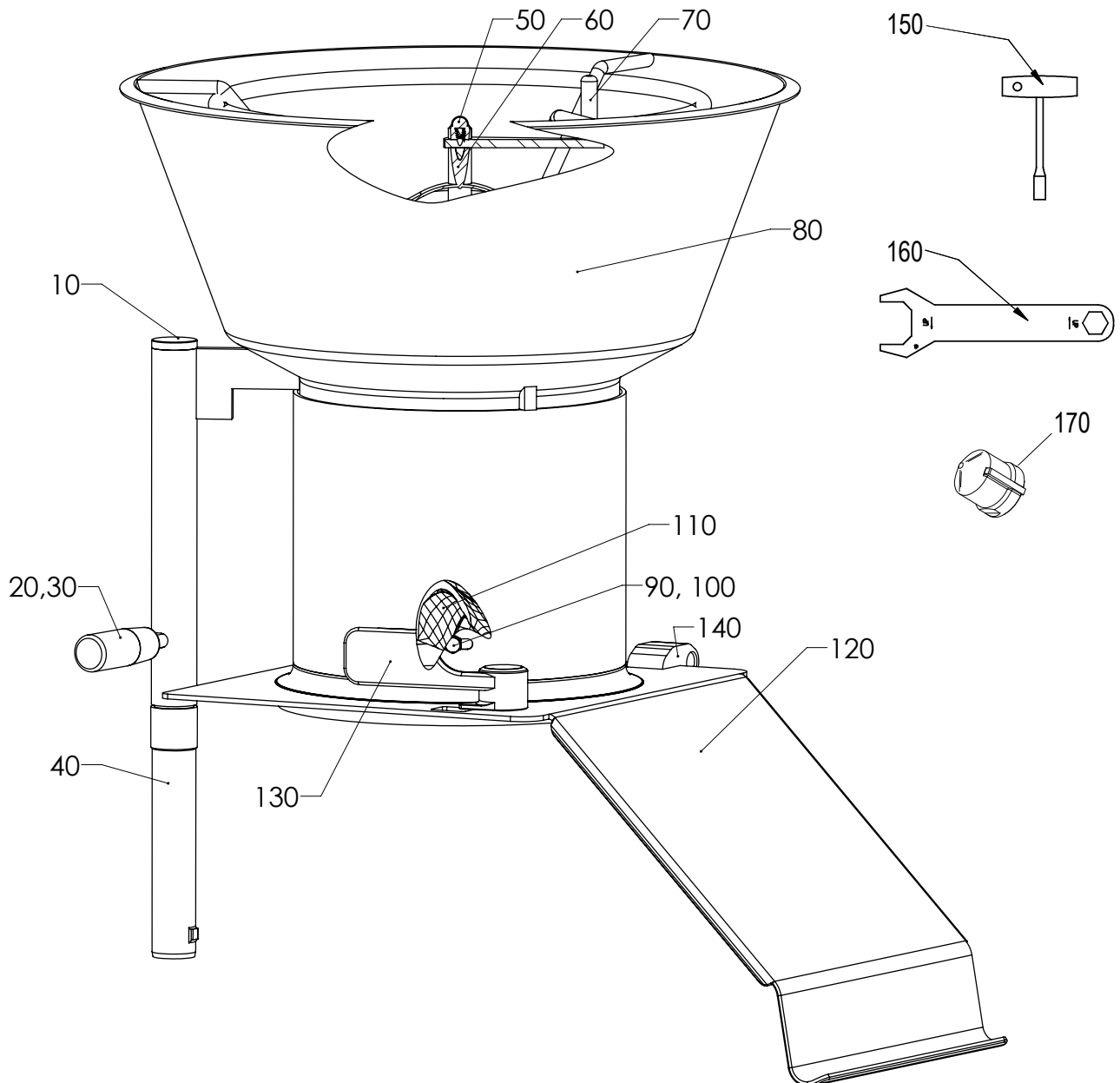
## RG-300i FEED CYLINDER

No. on drawing	Item No.	Description	Pcs
10	47011	Feed cylinder	1
20	47360	Locking handle compl.	1
30	47361	Magnet compl.	1



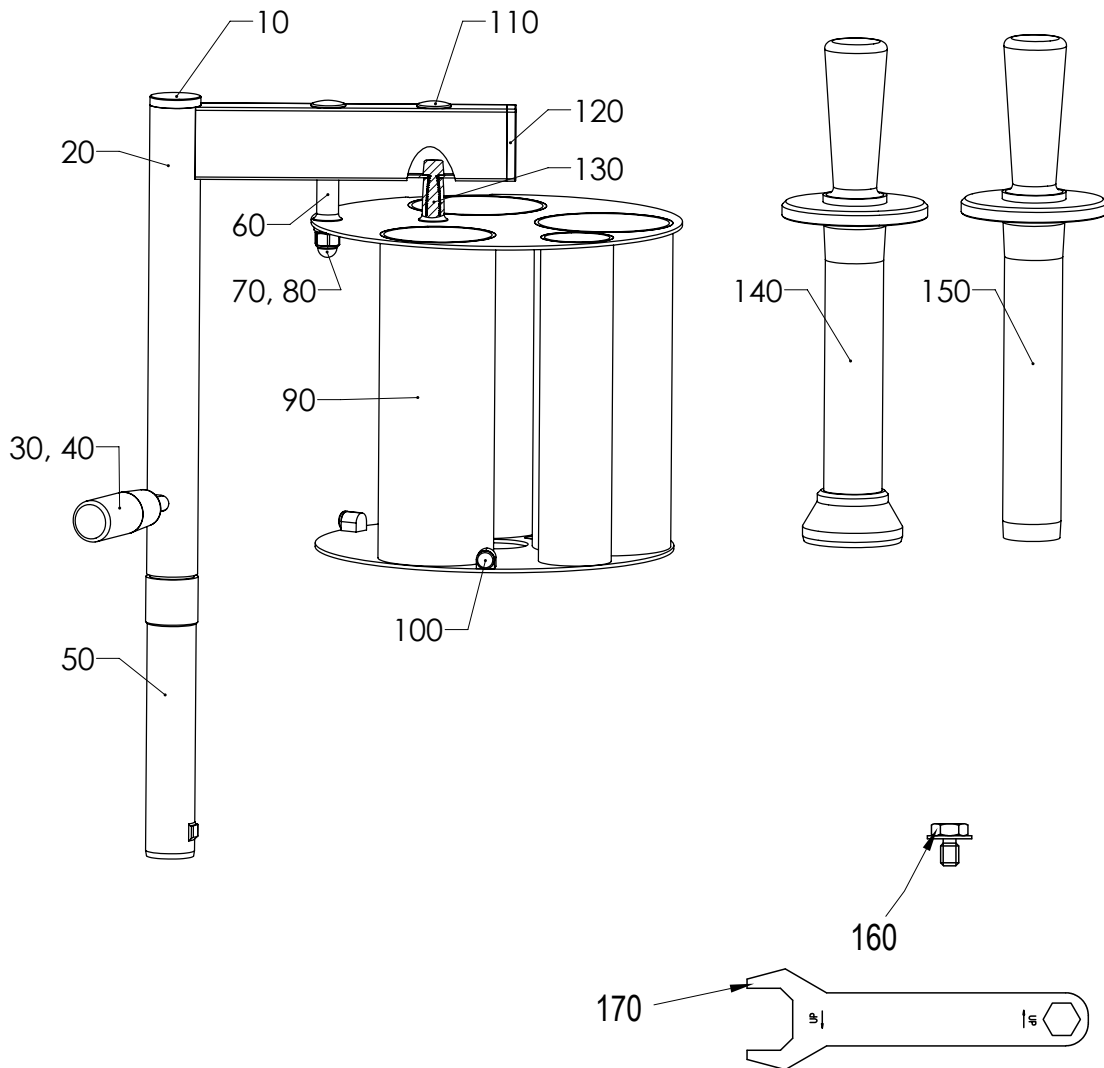
## RG-300i FEED HOPPER

No. on drawing	Item No.	Description	Pcs
10	10345	Plug GL 28 black	1
20	10343	Handle I280/65-M8	1
30	3149	Stud screw	1
40	47093	Shaft	1
50	14028	Nut MHM M8	1
60	3246	Stirrer for hopper	1
70	3311	Agitator arm	1
80	47320	Hopper insert compl.	1
90	14026	Domed head nut MHM M6	4
100	14865	Stud screw SK6SS A4	4
110	37081	Guide	2
120	47318	Feed cylinder for hopper	1
130	47360	Locking handle compl.	1
140	47361	Magnet compl.	1
150	10521	Socket wrench NV10	1
160	3162	Wrench	1
170	40891	Stiring sleeve	1



## RG-300i 4-TUBE INSERT

No. on drawing	Item No.	Description	Pcs
10	10345	Plug GL 28 black	1
20	47507	Stand	1
30	3149	Stud screw	1
40	10343	Handle I280/65-M8	1
50	47093	Shaft	1
60	37138	Spacer 16	2
70	14028	Nut MHM M8	2
80	14088	Lock washer FBB 8.2 A2	2
90	47510	4-tube insert	1
100	3257	Guide knob	3
110	10455	Plug IKPT 1715S	2
120	10329	Plug IR20/40/1,5 S	1
130	14394	SCREW MC6S M8X40	2
140	47519	Pestle dia. 55	1
150	47521	Pestle dia. 31	1
160	3204	Locking bolt TR12V	1
170	3162	Wrench	1

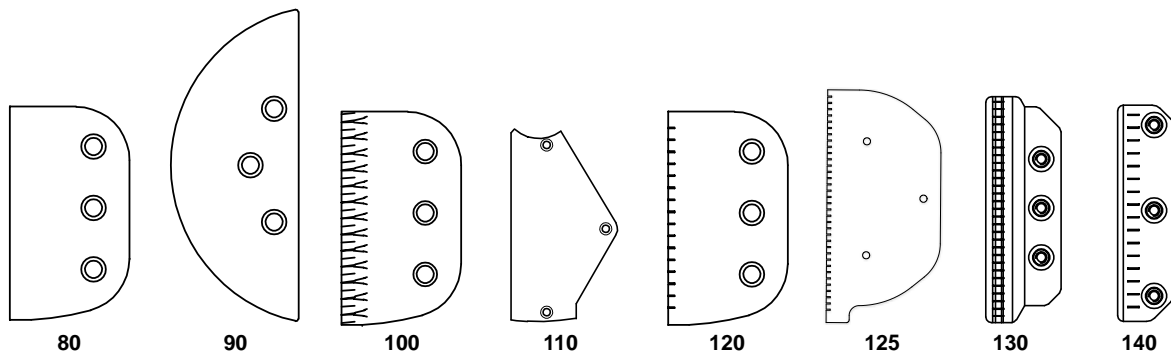


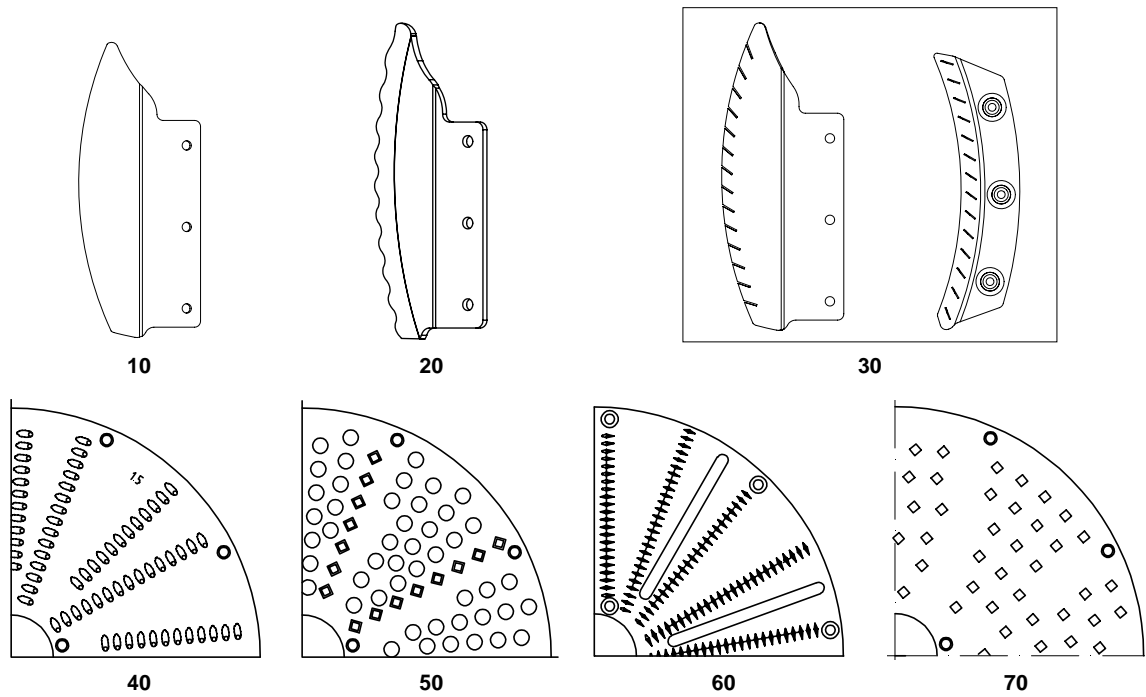
## SPARE PARTS CUTTING TOOLS FOR RG-350/RG-400/RG-300i AND RG-400i

Cutting Tool	No. on drawing	Item No.	Description
<b>Slicer</b>	10	63302	Knife, Slicer
<b>Crimping Slicer</b>	20	63300	Knife, Crimping Slicer
<b>Julienne Cutter</b>	30	63336	Kit spare part Julienne 2x2mm
		63356	Kit spare part Julienne 2x6mm
		63358	Kit spare part Julienne 3x3 mm
		63337	Kit spare part Julienne 4x4mm
		63338	Kit spare part Julienne 6x6mm
		63339	Kit spare part Julienne 8x8mm
		63335	Kit spare part Julienne 10x10m
<b>Grater/Shredder</b>	40	87128	Plate for 1.5 mm, Grater
		87129	Plate for 2 mm, Grater
		87130	Plate for 3 mm, Grater
		87131	Plate for 4.5 mm, Grater
		87132	Plate for 6 mm, Grater
		87133	Plate for 8 mm, Grater
		87134	Plate for 10 mm, Grater
<b>Fine Grater</b>	50	87135	Plate, Fine Grater
	60	87136	Plate, Grater Extra Fine
	70	87137	Plate, Hard Cheese Grater

## SPARE PARTS CUTTING TOOLS FOR RG-350/RG-400/RG-300i AND RG-400i

Cutting Tool	No. on drawing	Item No.	Description	
<b>Standard Slicer / HC Slicer</b>	80	87138	Knife, Standard Slicer	
<b>Fine Cut Slicer</b>	90	87139	Knife, Fine Cut Slicer	
<b>Crimping Slicer</b>	100	87140	Knife, Crimping Slicer	
<b>Soft Slicer</b>	110	87141	Knife, Soft Slicer	
<b>Julienne Cutter</b>	130	87142	Kit Knife block, 2.5x2.5 mm	
		87143	Kit Knife block, 2.5x6 mm	
<b>Julienne Cutter / HC Julienne Cutter</b>	80	87138	Knife, Standard Slicer	
		120	87157	Horizontal knife, 2x6 mm
			87145	Horizontal knife, 4x4 mm
			87146	Horizontal knife, 6x6 mm
			87147	Horizontal knife, 10x10 mm
	125	87156	Horizontal knife, 2x2 mm	
		87159	Horizontal knife, 2x6 mm	
	130	87142	Kit Knife block, 2.5x2.5 mm	
		87143	Kit Knife block, 2.5x6 mm	
		87148	Kit knife block, 2x2 mm	
		87158	Knife block, 2x6 mm	
	140	87149	Kit Knife block, 4x4 mm	
		87150	Kit Knife block, 6x6 mm	
		87151	Kit Knife block, 10x10 mm	
	<b>HC Julienne Cutter</b>	120	87152	Horizontal knife, 2x2 mm
87155			Horizontal knife, 2.5x2.5 mm	
87153			Horizontal knife, 8x8 mm	
140		87154	Kit Knife block, 8x8 mm	





## SPARE PARTS POTATO CHIP GRID AND DICING GRIDS FOR RG-350/RG-400/RG-300i AND RG-400i

Cutting Tool	No. on drawing	Item No.	Description
<b>Potato Chip Grid</b>	150	35734	Compl. knife kit Potato Chip Grid
<b>Center ring</b>	160	62743	Center ring
<b>Ceramic kit for RG-400i</b>	170	37252	Ceramic kit
<b>Complete knife kit for Dicing Grids</b>	180	62431	Compl. kit knives, DG 6 mm
		62432	Compl. kit knives, DG 8 mm
		62433	Compl. kit knives, DG 10 mm
		62434	Compl. kit knives, DG 12 mm
		62435	Compl. kit knives, DG 15 mm
		62436	Compl. kit knives, DG 20 mm
		62437	Compl. kit knives, DG 25 mm
<b>1 meter knife blade for Dicing Grids</b>	190	82331	Knife blade, upper 6 mm, 1 M
		82332	Knife blade, lower 6 mm, 1 M
		82333	Knife blade, upper 8 mm, 1 M
		82334	Knife blade, lower 8 mm, 1 M
		82335	Knife blade, upper 10 mm, 1 M
		82336	Knife blade, lower 10 mm, 1 M
		82337	Knife blade, upper 12 mm, 1 M
		82338	Knife blade, lower 12 mm, 1 M
		82339	Knife blade, upper 15 mm, 1 M
		82340	Knife blade, lower 15 mm, 1 M
		82341	Knife blade, upper 20 mm, 1 M
		82342	Knife blade, lower 20 mm, 1 M
82343	Knife blade, upper 25 mm, 1 M		
82344	Knife blade, lower 25 mm, 1 M		
<b>Tool for inner lock ring</b>	200	62449	Tool for inner lock ring

