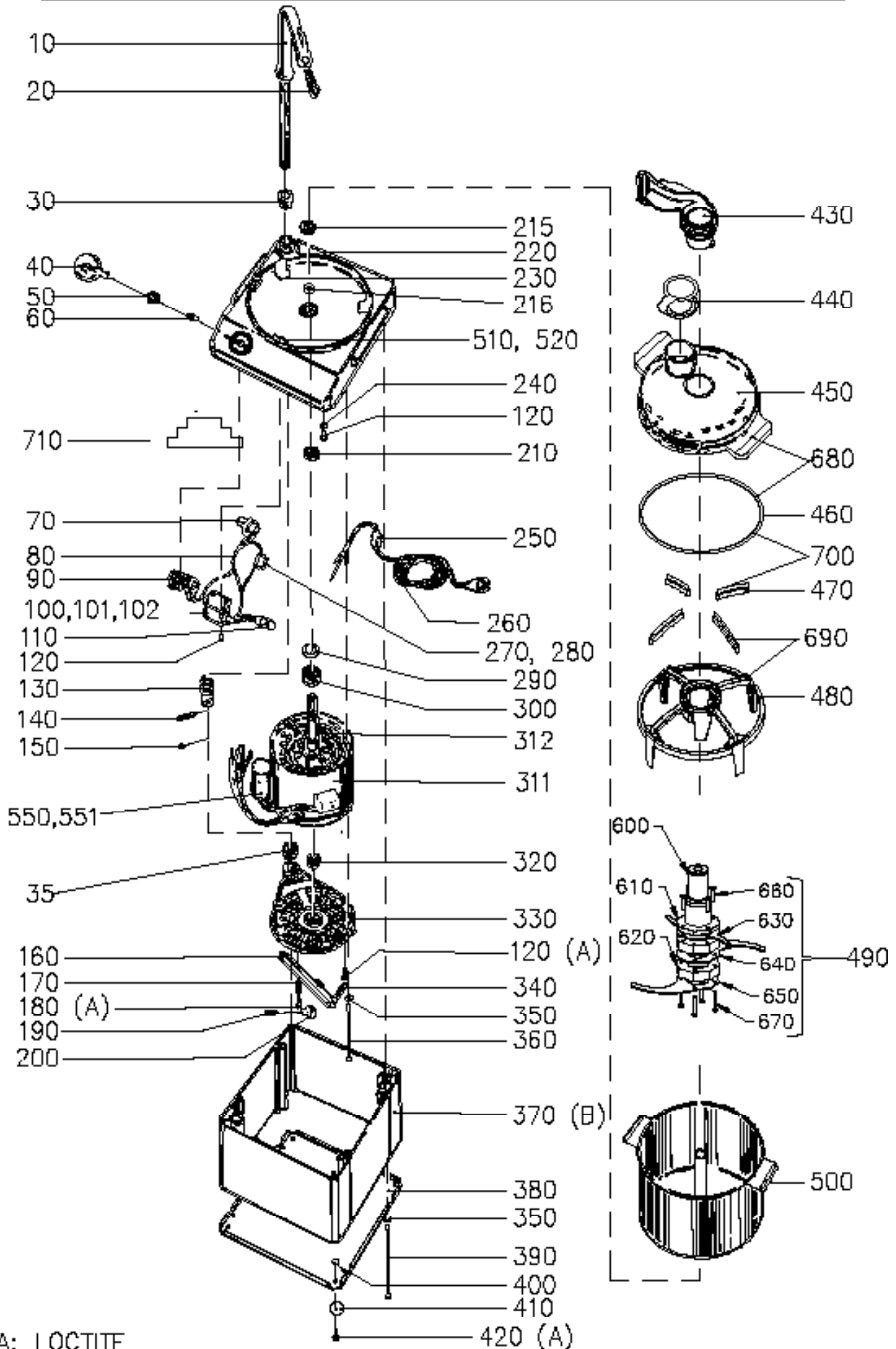


VERTICAL CUTTER BLENDER VCB-61 / VCB-62



A: LOCTITE  
 B: SILICONE ALL THE WAY AROUND HOUSING

**VERTICAL CUTTER BLENDER VCB-61**

| No. on drawing | Item No. | Description                             | Pcs |
|----------------|----------|---|-----|
| 10             | 22133    | Safety arm                              | 1   |
| 20             | 22068    | Magnetic switch HM-17                   | 1   |
| 30             | 22486    | Bushing, safety arm, upper              | 1   |
| 35             | 22064    | Bushing, safety arm                     | 1   |
| 40             | 22091    | Twist knob pulse 0-I                    | 1   |
| 50             | 10384    | Seal washer V-10A                       | 1   |
| 60             | 14131    | Screw MFX-H M4X16                       | 2   |
| 70             | 15769    | Safety micro switch                     | 1   |
| 80             | 22085    | Wire harness AWG compl.                 | 1   |
| 90             | 15468    | Selecting switch CA20, US               | 1   |
| 100            | 15822    | Contactactor BF2510A110                 | 1   |
| 101            | 15820    | Contactactor BF0910A230                 | 1   |
| 110            | 15111    | RC-circuit 110v                         | 1   |
| 110            | 15110    | RC-circuit 230v                         | 1   |
| 120            | 14332    | Screw MRX M4X10 A2 70 PH                | 5   |
| 130            | 22456    | Pressure spring                         | 1   |
| 140            | 22493    | Pin                                     | 1   |
| 150            | 14771    | Screw RXK-H ST 4,2X9,5 FZB              | 1   |
| 160            | 22150    | Brake device                            | 1   |
| 170            | 22063    | Sleeve                                  | 2   |
| 180            | 14336    | Screw MRT M4X25 A2 70 T20               | 1   |
| 190            | 14754    | Screw RX-TP 6-19X20 FZB                 | 1   |
| 200            | 22046    | Cam knob                                | 1   |
| 210            | 10451    | Sealwash 20X30X5 TRA200200              | 1   |
| 215            | 10450    | Seal washer BAUD2SL 25X35X7             | 1   |
| 216            | 10262    | Seal ring V-18S                         | 1   |
| 220            | 22231    | Top cover compl.                        | 1   |
| 230            | 22488    | Buffer                                  | 3   |
| 240            | 14084    | Lock washer FBB 4.1 A2                  | 3   |
| 250            | 15381    | Cable ret PR 22.5 dia 15                | 1   |
| 260            | 22203    | Supply cord AWG 12 1 PHA 110 v          | 1   |
| 260            | 15147    | Supply cord CB RG-100/200/250/350/61/41 | 1   |
| 270            | 15384    | Fuse T100MA                             | 1   |
| 280            | 15385    | Fuse holder                             | 1   |
| 290            | 10373    | Pre load washer 46X38X0,4               | 1   |
| 300            | 10420    | Ball bearing 6005-2RS1                  | 1   |
| 311            | 15742    | Stator VCB/HCM61 110-120 1 60           | 1   |
| 311            | 15743    | Stator VCM-41/VCB-61 220-240 1 50/60    | 1   |
| 312            | 15736    | Rotor VCB-61 1100W 1500RPM              | 1   |
| 320            | 10255    | Ball bearing 6203-2RS                   | 1   |
| 330            | 22215    | Motor shield Leroy H50                  | 1   |
| 340            | 22457    | Draw spring                             | 1   |
| 350            | 14085    | Lock washer FBB 5,1 A2                  | 8   |
| 360            | 22143    | Screw, motor M5X192                     | 4   |
| 370            | 22136    | Machine housing compl.                  | 1   |
| 380            | 22138    | Protection plate                        | 1   |
| 390            | 22054    | Screw, housing M5X175                   | 4   |
| 400            | 14004    | Nut M6M M4 A2 70                        | 4   |
| 410            | 10494    | Rubber foot F-107 B                     | 4   |
| 420            | 14424    | Screw LKCSF M4X12 A2 70                 | 4   |
| 430            | 22472    | Scraper handle                          | 1   |
| 440            | 22446    | Plug, rubber                            | 1   |
| 450            | 22435    | Lid                                     | 1   |
| 460            | 22438    | Seal, lid                               | 1   |
| 470            | 22439    | Scraper blade                           | 4   |
| 480            | 22436    | Scraper                                 | 1   |

**VERTICAL CUTTER BLENDER VCB-61**

| No. on drawing | Item No. | Description                | Pcs |
|----------------|----------|----------------------------|-----|
| 490            | 22502    | Knife unit                 | 1   |
| 500            | 22451    | Bowl 6L                    | 1   |
| 510            | 22487    | Rotary stop                | 1   |
| 520            | 14604    | Screw MFS M3X16 A4         | 2   |
| 530            | 15282    | Starting relay, 2000V      | 1   |
| 530            | 15283    | Starting relay, 100V       | 1   |
| 550            | 15287    | Capacitor 400 MF, 125V     | 1   |
| 550            | 15290    | Capacitor 150MF, 260V 230V | 1   |
| 551            | 15288    | Capacitor 40 MF, 400V      | 1   |
| 600            | 22504    | Knife head                 | 1   |
| 610            | 22505    | Knife support              | 1   |
| 620            | 22506    | Spacer                     | 1   |
| 630            | 22507    | Knife, turning             | 1   |
| 640            | 22508    | Knife, serrated, middle    | 1   |
| 650            | 22509    | Knife, serrated, low       | 1   |
| 660            | 14152    | Screw MFS M5X25            | 4   |
| 670            | 14154    | Screw MFS M5X35            | 4   |
| 680            | 22494    | Lid incl. seal ring        | 1   |
| 690            | 22495    | Scraper incl. wiper blades | 1   |
| 700            | 22496    | Wiper blades and seal ring | 1   |
| 710            | 22691    | Kit time relay             | 1   |

**VERTICAL CUTTER BLENDER VCB-62**

| No. on drawing | Item No. | Description                 | Pcs |
|----------------|----------|-----------------------------|-----|
| 10             | 22133    | Safety arm                  | 1   |
| 20             | 22068    | Magnetic switch HM-17       | 1   |
| 30             | 22486    | Bushing, safety arm, upper  | 1   |
| 35             | 22064    | Bushing, safety arm         | 1   |
| 40             | 22092    | Twist knob pulse 0-I-II     | 1   |
| 50             | 10384    | Seal washer V-10A           | 1   |
| 60             | 14131    | Screw MFX-H M4X16           | 2   |
| 70             | 15769    | Safety micro switch         | 1   |
| 80             | 22187    | Wire harness AWG 3 phase    | 1   |
| 90             | 15467    | Selecting switch CA10, US   | 1   |
| 102            | 15818    | Contactactor 11BG0610A400   | 1   |
| 102            | 15810    | Contactactor 11BG0610A230   | 1   |
| 110            | 15110    | RC-circuit 230v             | 1   |
| 120            | 14332    | Screw MRX M4X10 A2 70 PH    | 5   |
| 130            | 22456    | Pressure spring             | 1   |
| 140            | 22493    | Pin                         | 1   |
| 150            | 14771    | Screw RXK-H ST 4,2X9,5 FZB  | 1   |
| 160            | 22150    | Brake device                | 1   |
| 170            | 22063    | Sleeve                      | 2   |
| 180            | 14336    | Screw MRT M4X25 A2 70 T20   | 2   |
| 190            | 14754    | Screw RX-TP 6-19X20 FZB     | 1   |
| 200            | 22046    | Cam knob                    | 1   |
| 210            | 10451    | Sealwash 20X30X5 TRA200200  | 1   |
| 215            | 10450    | Seal washer BAUD2SL 25X35X7 | 1   |
| 216            | 10262    | Seal ring V-18S             | 1   |
| 220            | 22231    | Top cover compl.            | 1   |
| 230            | 22488    | Buffer                      | 3   |
| 240            | 14084    | Lock washer FBB 4.1 A2      | 3   |
| 250            | 15381    | Cable ret PR 22.5 dia 15    | 1   |
| 260            | 15142    | Supply cord CB 3 phse       | 1   |

**VERTICAL CUTTER BLENDER VCB-62**

| No. on drawing | Item No. | Description                  | Pcs |
|----------------|----------|------------------------------|-----|
| 270            | 15384    | Fuse T100MA                  | 1   |
| 280            | 15385    | Fuse holder                  | 1   |
| 290            | 10373    | Pre load washer 46X38X0,4    | 1   |
| 300            | 10420    | Ball bearing 6005-2RS1       | 1   |
| 311            | 15744    | Stator VCM62 220-240 3 50/60 | 1   |
| 311            | 15745    | Stator VCM62 380-415 3 50/60 | 1   |
| 312            | 15733    | Rotor VCB-62 1500/900W       | 1   |
| 320            | 10255    | Ball bearing 6203-2RS        | 1   |
| 330            | 22215    | Motor shield Leroy H50       | 1   |
| 340            | 22457    | Draw spring                  | 1   |
| 350            | 14085    | Lock washer FBB 5,1 A2       | 8   |
| 360            | 22143    | Screw, motor M5X192          | 4   |
| 370            | 22136    | Machine housing compl.       | 1   |
| 380            | 22138    | Protection plate             | 1   |
| 390            | 22142    | Screw, M6S M5X201 A2         | 4   |
| 400            | 14004    | Nut M6M M4 A2 70             | 4   |
| 410            | 10494    | Rubber foot F-107 B          | 4   |
| 420            | 14424    | Screw LKCSF M4X12 A2 70      | 4   |
| 430            | 22472    | Scraper handle               | 1   |
| 440            | 22446    | Plug, rubber                 | 1   |
| 450            | 22435    | Lid                          | 1   |
| 460            | 22438    | Seal, lid                    | 1   |
| 470            | 22439    | Scraper blade                | 4   |
| 480            | 22436    | Scraper                      | 1   |
| 490            | 22502    | Knife unit                   | 1   |
| 500            | 22451    | Bowl 6L                      | 1   |
| 510            | 22487    | Rotary stop                  | 1   |
| 520            | 14604    | Screw MFS M3X16 A4           | 2   |
| 600            | 22504    | Knife head                   | 1   |
| 610            | 22505    | Knife support                | 1   |
| 620            | 22506    | Spacer                       | 1   |
| 630            | 22507    | Knife, turning               | 1   |
| 640            | 22508    | Knife, serrated, middle      | 1   |
| 650            | 22509    | Knife, serrated, low         | 1   |
| 660            | 14152    | Screw MFS M5X25              | 4   |
| 670            | 14154    | Screw MFS M5X35              | 4   |
| 680            | 22494    | Lid incl. seal ring          | 1   |
| 690            | 22495    | Scraper incl. wiper blades   | 1   |
| 700            | 22496    | Wiper blades and seal ring   | 1   |
| 710            | 22692    | Kit time relay               | 1   |